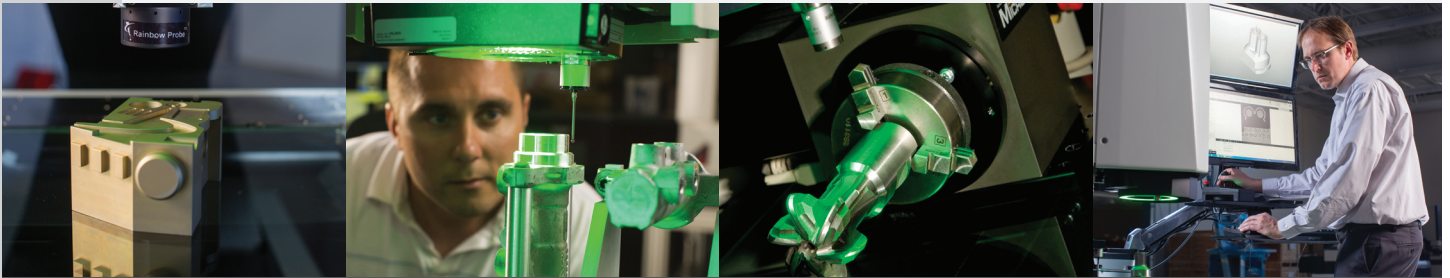
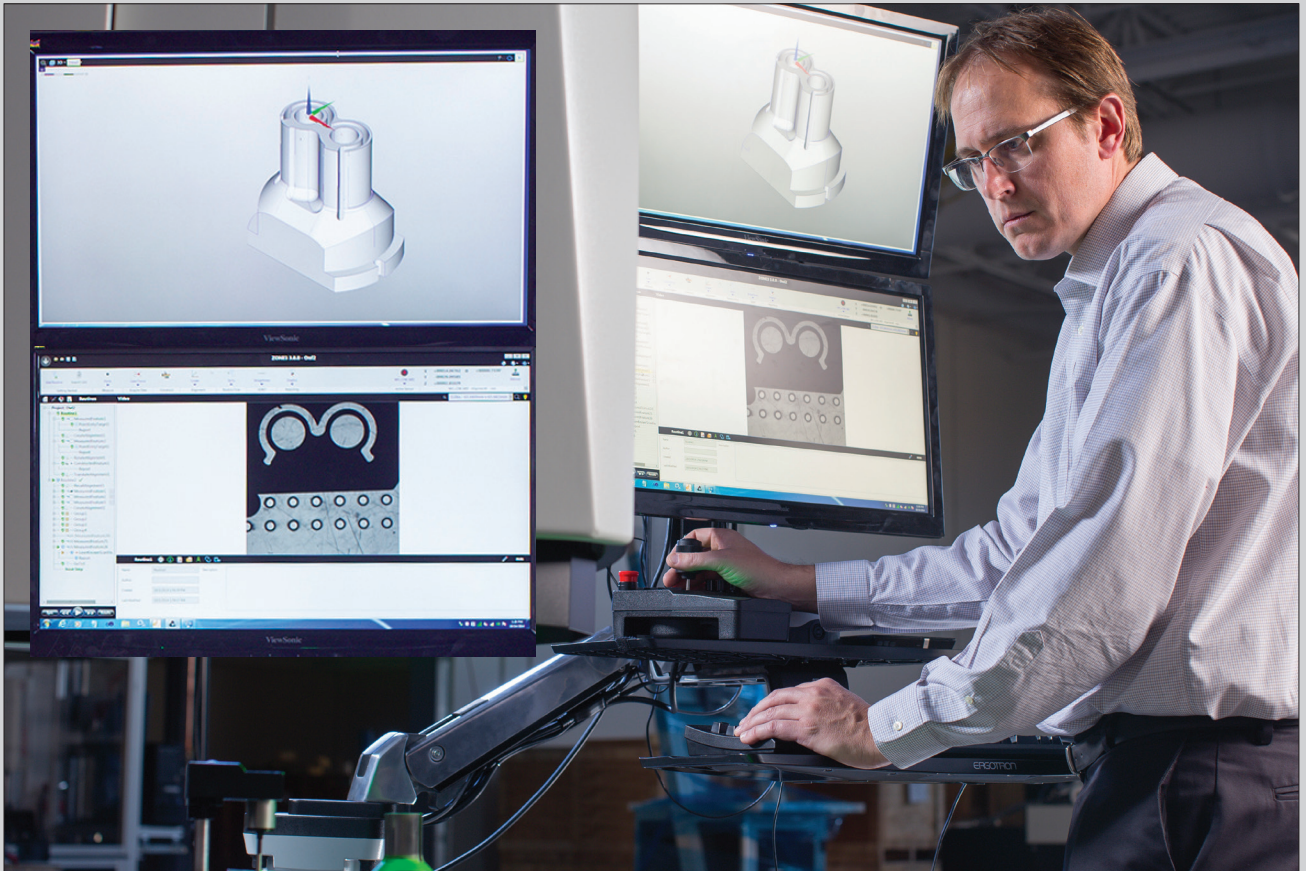


**ZONE3** | 3D Multisensor Metrology Software



Precision for People

# Put 30 Years of Multisensor Experience to Work for You



ZONE3<sup>®</sup> metrology software puts the power of OGP's 30 years of multisensor experience into your SmartScope<sup>®</sup> system for faster, easier and more productive measurements than ever before.

- **ZONE3 is fast.** Synchronous, full field image processing and high speed cameras allow entire scenes to be measured instantly.
- **ZONE3 is capable.** Full multisensor capability, including in-built scanning laser and scanning probe support, GD&T and custom scripting.
- **ZONE3 is easy to learn.** The user interface is centered on the part's 3D CAD model. Alignments, measurements and constructions are shown graphically in real time. The same procedures are used for all sensors. Learn one, you've learned them all.

ZONE3 integrates seamlessly with other QVI metrology applications including MeasureMind<sup>®</sup> and Measure-X<sup>®</sup>, letting you retain your library of existing part routines while adding new 3D measurement capability to your SmartScope multisensor system.

ZONE3 is available exclusively for OGP measuring systems. Contact your OGP representative to learn how you can transform the productivity of your SmartScope Flash, ZIP or Quest measurement system with ZONE3.

# True Multisensor Metrology Software

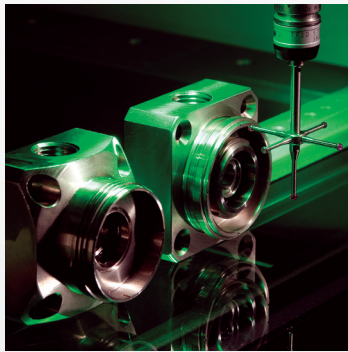
ZONE3 seamlessly integrates all sensors and deployment mechanisms, ready to use in any order — letting you choose the best measurement tool for every feature of the part.



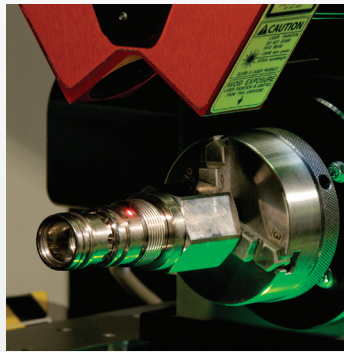
Video



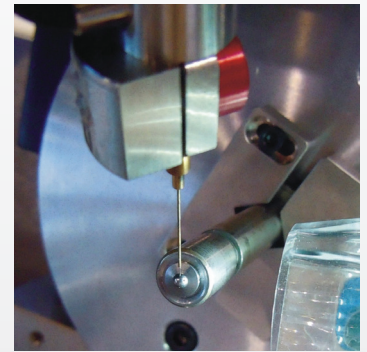
Scanning Probe



Touch Trigger Probe



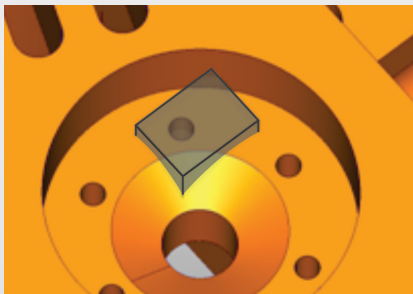
Laser



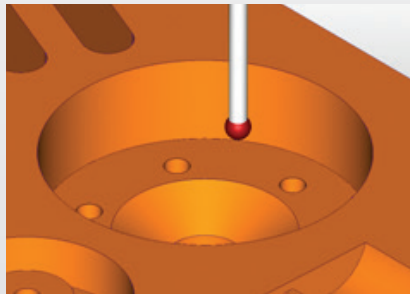
Micro-Probe

## Visualize the Sensor

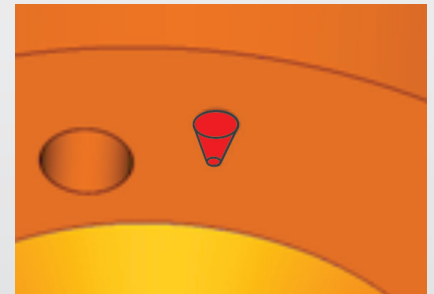
Video



Touch Probe



Laser

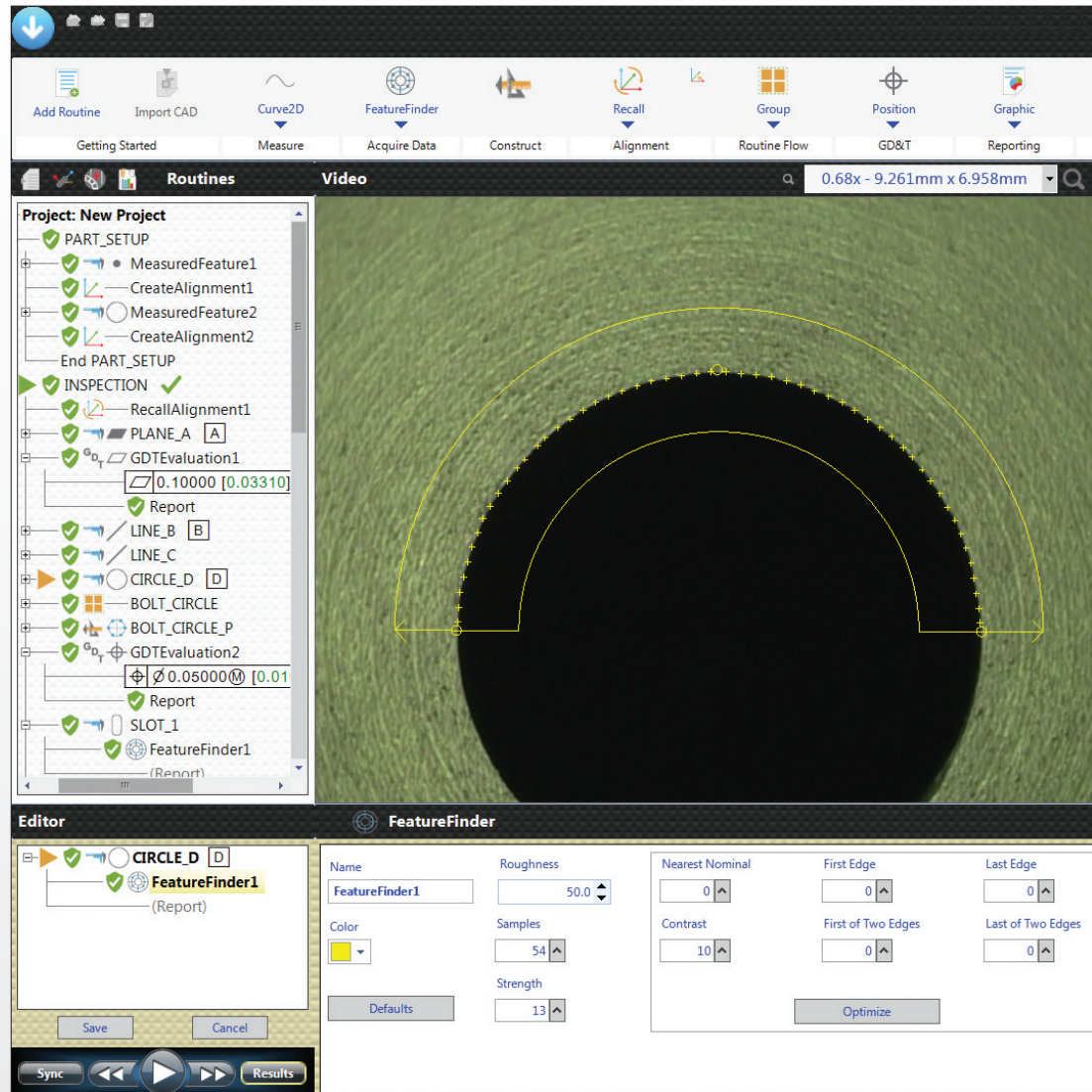


ZONE3 uses real-time animations to show the current field of view, touch probe position, and laser range. Previews show the expected results of user commands, making it easy to confirm actions.

Easily edit individual point details for all sensors in a common spreadsheet.

#	Type	X	Y	Z	FOV	Named Lighting
1	Line	55.94697	57.79229	60.00000	7.723mm x 5.799mm	Lomag_backlight
2	Line	51.72979	47.08826	60.00000	7.723mm x 5.799mm	Lomag_backlight
3	Arc	49.86829	44.26719	60.00000	3.745mm x 2.809mm	Midmag_backlight
4	Arc	47.43039	44.98783	60.00000	3.745mm x 2.809mm	Midmag_backlight
5	Line	47.35929	46.88776	60.00000	7.723mm x 5.799mm	Lomag_backlight
6	Line	51.56873	57.59179	60.00000	7.723mm x 5.799mm	Lomag_backlight
7	Line	54.15924	62.94385	60.00000	7.723mm x 5.799mm	Lomag_backlight
8	Arc	54.15435	62.94669	60.00000	3.745mm x 2.809mm	Midmag_backlight
9	Arc	56.86605	62.66021	60.00000	3.745mm x 2.809mm	Midmag_backlight

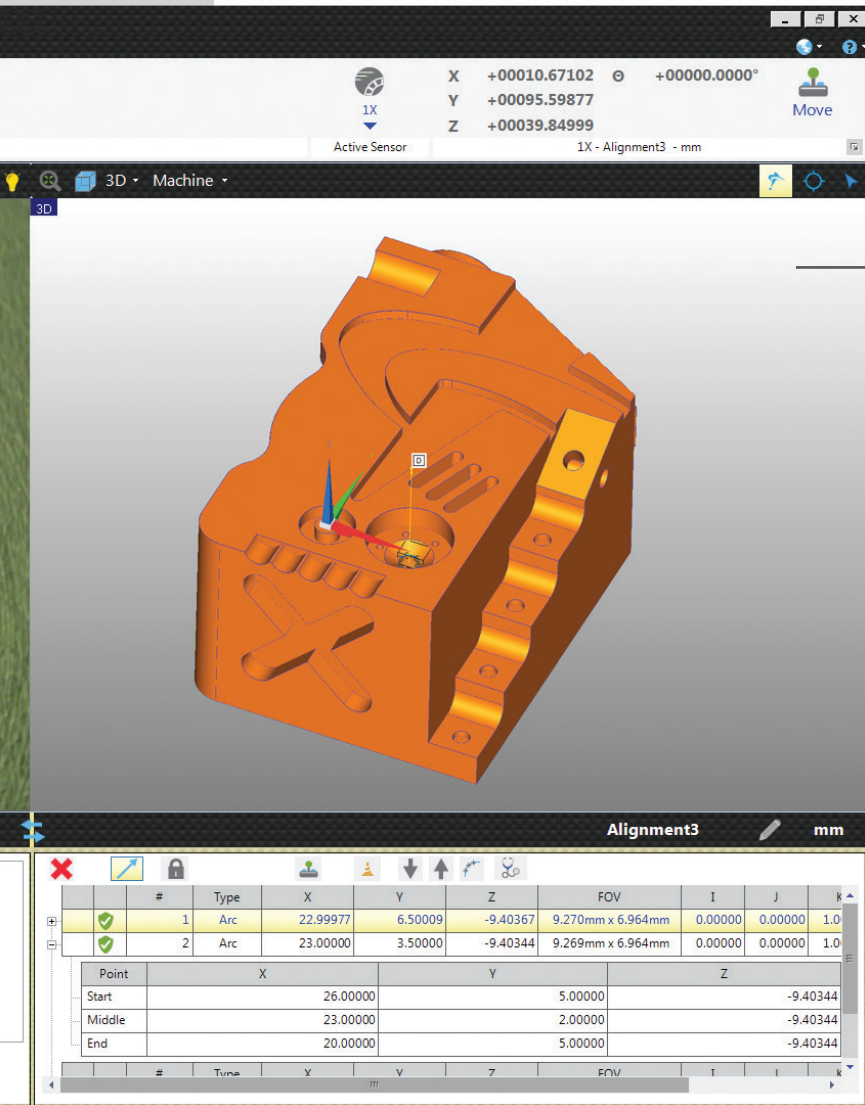
# Visual 3D Model – the Key to Productivity



## Choose Your Own Programming Style

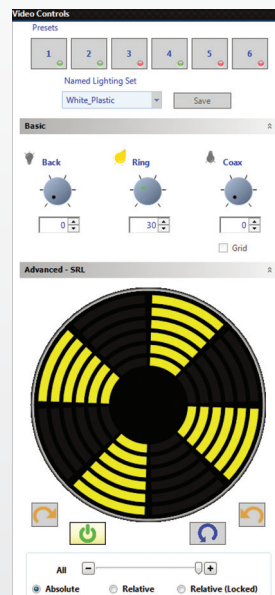
ZONE3 features a clear, simple User Interface, with all key features logically arranged and in view at all times — with no annoying pop-up windows to block the user's view.

The straightforward layout offers three logical areas to create or edit measurement routines — the Tree View Window, the Video Window and the Model Window. Work in the window that suits your style of programming.



## Real-Time Kinematic Model

Kinematic Model simulation of the machine, parts, fixtures and sensors, updated in real-time.



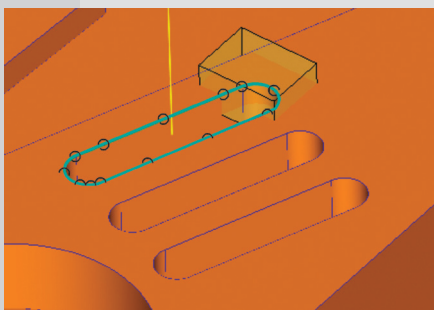
## Intuitive Illumination Controls

Simple controls let you program the light source, intensity, direction and angle for each measurement finder. Programmable presets let you easily re-use frequently used lighting combinations.

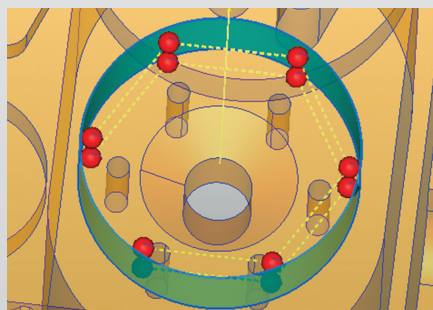
## AutoPath Capability

ZONE3 AutoPath uses CAD nominals to automatically create an optimal path for each measurement. AutoPath is fully multisensor capable. Use AutoPath with any sensor.

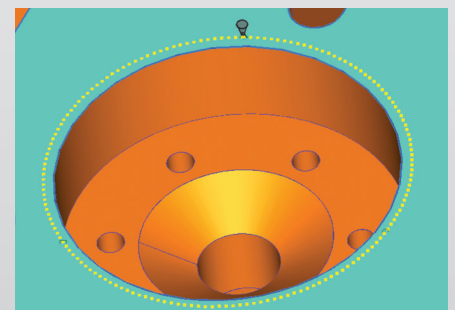
Video



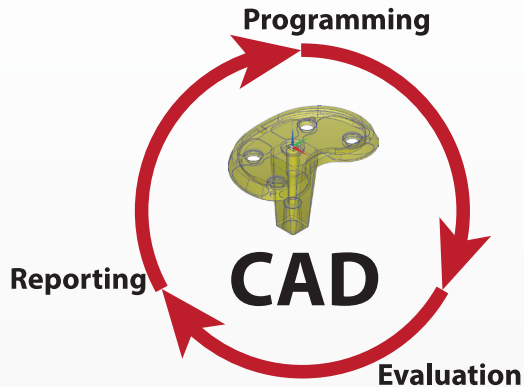
Touch Probe



Laser



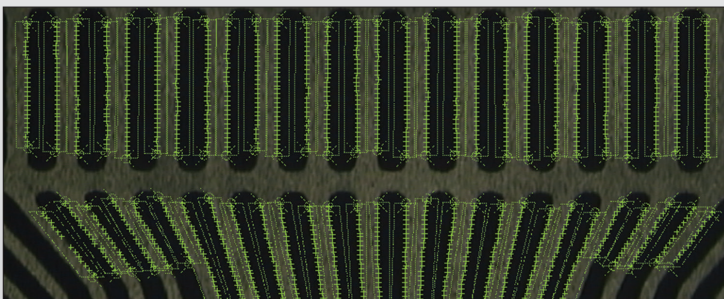
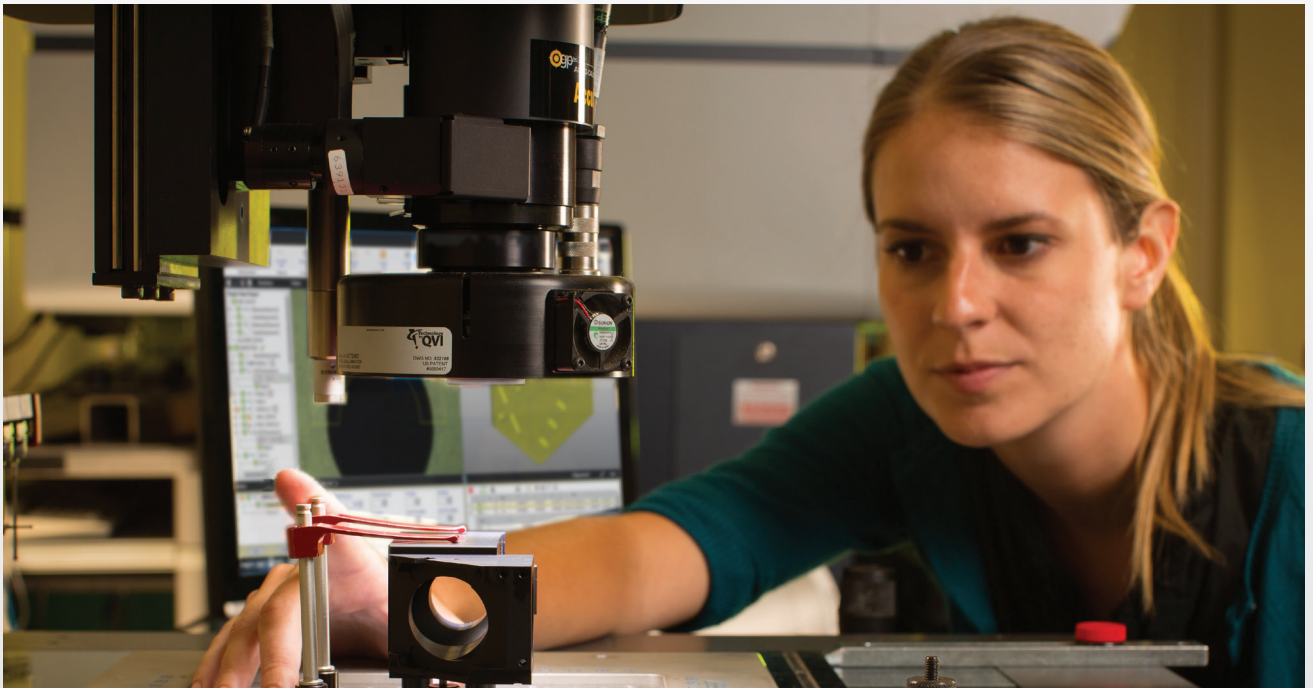
# Visualize the Entire Measurement Process



## From Start to Finish

ZONE3 builds measurement routines directly from 3D CAD files. Easily import common CAD formats including STEP, IGES, VDA and DXF – with no need for file preparation or transformation. Just load the CAD file and go. ZONE3 automatically aligns the measured part with its CAD model.

ZONE3's Contextual Feature Creation bases measurements on selected sensor types. If a touch probe is selected, ZONE3 automatically deduces the user's intention to measure a surface. Select video and ZONE3 assumes an edge measurement is needed.



*SnapShot™ Full-Field Image Processing — over 1500 points on 57 features are captured simultaneously*

## Productivity-Maximizing Tools

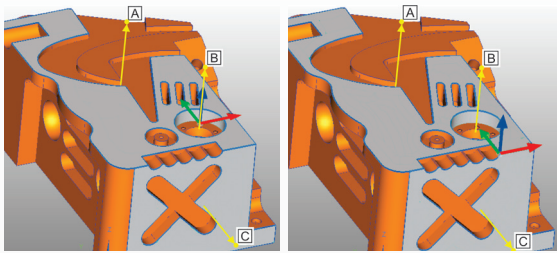
ZONE3 offers a series of tools to maximize throughput and system utilization.

- Parametric Programming
- "Apply to Similar"
- AutoPath Generation
- Drag-and-Drop: Copy, Feature Parameters, Report
- SnapShot™ Full-Field Image Processing
- Intelligent Routine Optimization

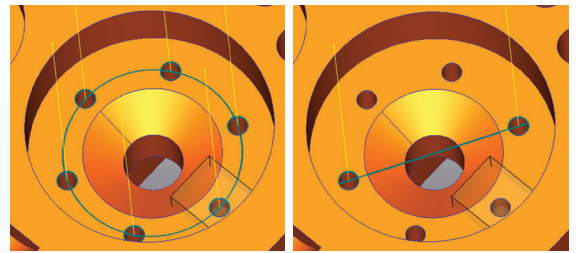
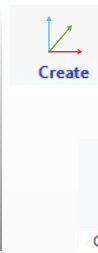
# See It for Yourself

## Visual Validation Guides You Through the Measurement Process

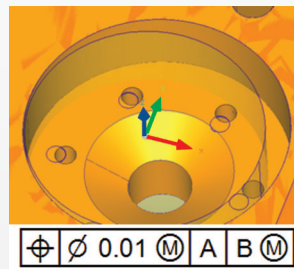
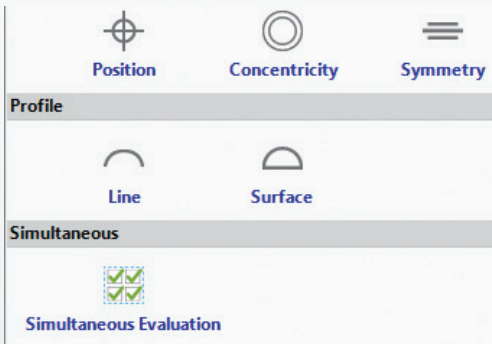
ZONE3 previews offer visual validation of each operation *before* it's executed. You get immediate visual feedback so common errors and unintended consequences are avoided.



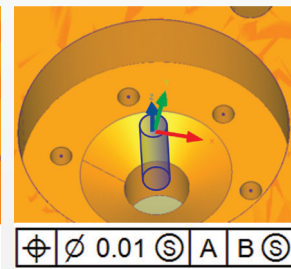
**Two different outcomes** based on the user's selection of Datums A-B-C (left), or A-C-B (right).



**Constructions** of bolt hole circle and maximum distance between two holes in that circle.



Maximum Material Condition



Regardless of Feature Size

**Two tolerance condition outcomes** based on selected material condition.

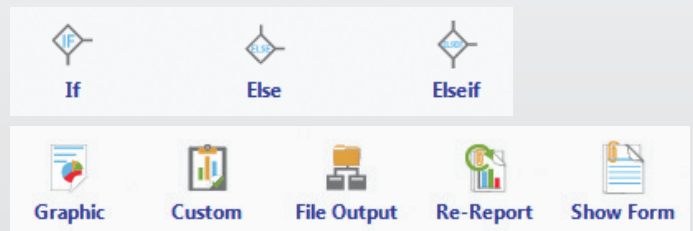
# Make It Yours

ZONE3 routines can be easily customized using variables, parametric programming, custom reports, or other advanced programming capabilities.

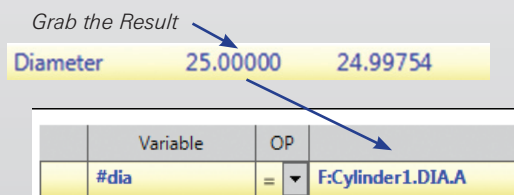
## Advanced Programming

Create turnkey solutions using object oriented programming.

Variable	Variable	OP	Expression
	#Plating_Thkns	=	.010
	#Plated_Dia	=	F:Circle1.DIA.A - 2 * #Plating_Thkns



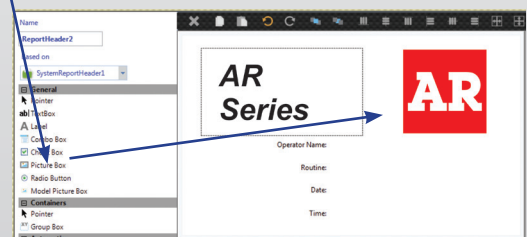
## Drag and Drop Variables and Reports



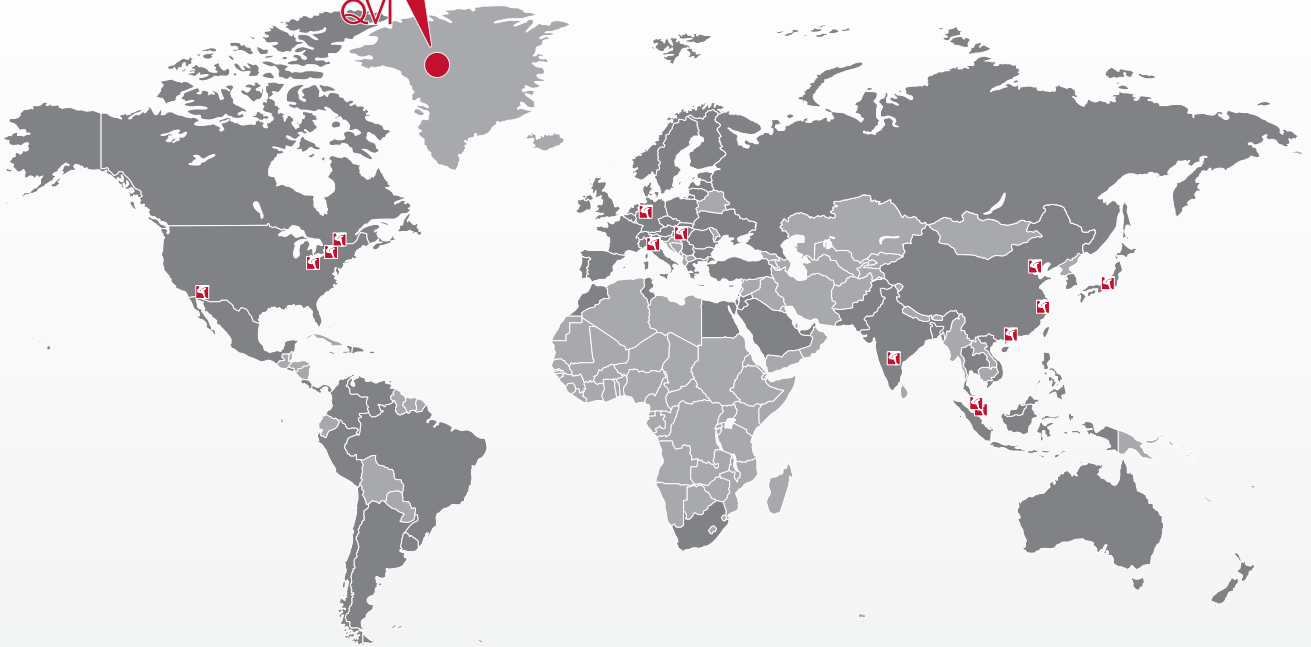
Drag and Drop to Set the Variable

Grab a Picture

Drag and Drop to Add Graphics or Part Information to your Report



Quality Vision International  
Precision for People



Quality Vision International (QVI®) is the world's largest vision metrology company. Founded in 1945, QVI is the world leader in optical, electronic and software technologies for vision and multisensor measuring systems.

### **ZONE3 Features**

- Full routine programming from 3D CAD
- Real-time kinematic model
- ASME Y14.5 and ISO 1101 GD&T with animated tolerance zones\*
- Interactive & dynamic graphical reporting
- Probe Builder with live model
- Alignment Assistance with Degrees of Freedom animation
- SnapShot™ full-field image processing

*\*U.S. Patent Number 8 793 097 B2*

### **ZONE3 Availability**

ZONE3 is available exclusively for new or installed OGP® SmartScope® Flash, ZIP or Quest measuring systems. Contact your OGP representative for more information.

### **ZONE3 Pro Features**

**ZONE3 Pro** adds the following features —

- Simultaneity for GD&T
- Advanced Reporting
- Advanced Programming

### **ZONE3 Offline Features**

- Includes ZONE3 Pro features
- Image simulation from CAD
- Multisensor visualization



### **Optical Gaging Products**

850 Hudson Avenue Rochester, New York 14621 Phone 585.544.0400 Fax 585.544.8092  
Visit [www.ogpnet.com](http://www.ogpnet.com) for more information or e-mail [info@ogpnet.com](mailto:info@ogpnet.com)

